

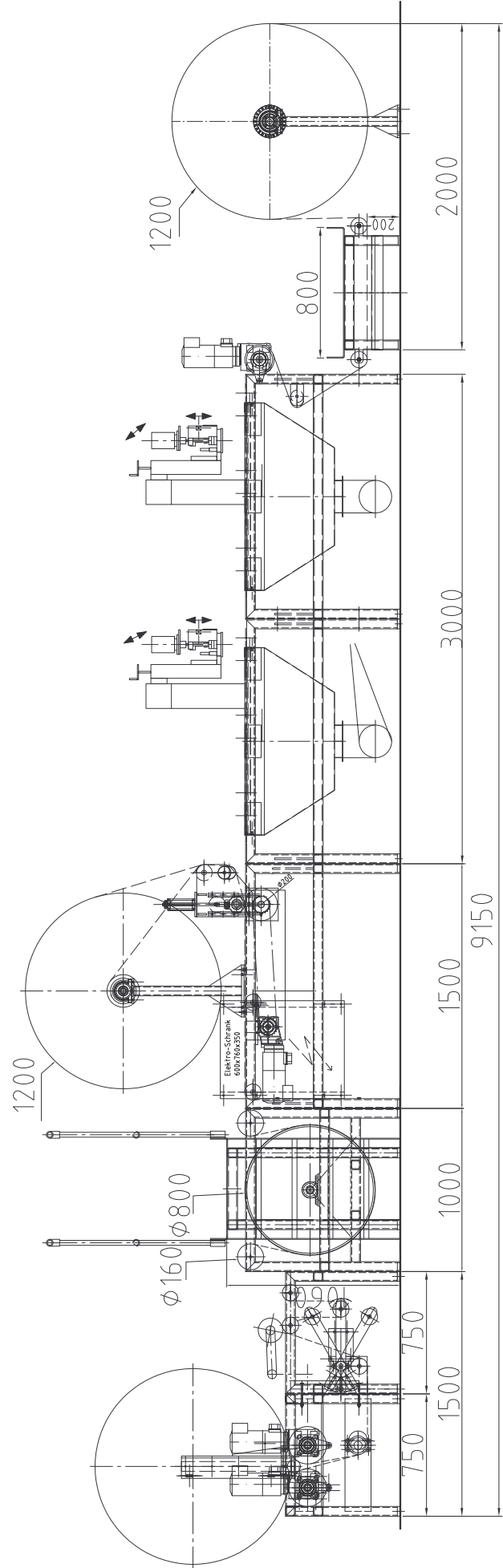
module 8
compensation unit
winding

module 7
cooling drum,
service platform
with stairs

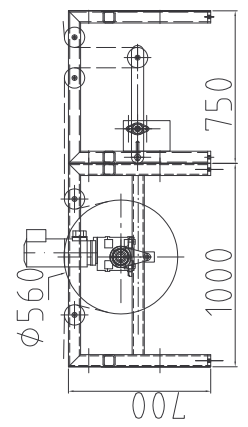
module 4
unwinding
2nd substrate
lamination station (nip)

module 3
hotmelt adhesive
stationary application

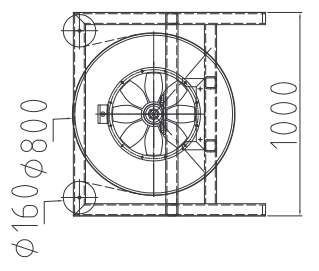
module 1
unwinding fix
1st substrate
service platform



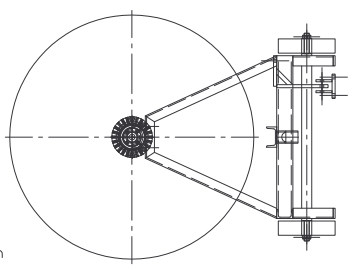
option
module 7.1
cooling drum with water-cooling



option
module 7.2
cooling drum with air-cooling



option
module 1.1
unwinding movable



<p>IMATEP SA GRAND-RUE 49-50 CH- 1700 FRIBOURG TEL. + 41 + 26 323 11 66 FAX. + 41 + 26 323 21 23</p>	<p>MPCLL Variante 4 Masstab M 1:36 70-020-250-500-01</p>
--	--